



ALL
USED
EQUIPMENT

TOYOTA HUSKI SKID STEER MODEL 4SDK8 SERVICE SHEET

Ref : SBL240901

Date: 10-10-24 Make Toyota Model: 4SDK8

Hour Meter: 1296 Unit Number: E00010

FILTERS

Engine oil filter - 15601-76009-71 $\frac{3}{4}$ UNF

Fuel Filter - 23303-64010 $\frac{3}{4}$ UNF

Air Filter - PA22768

Hydraulic Filter - 67532-42800-71 $\frac{13}{8}$ 145942

Hydraulic Filter -

Rocker Cover Gasket -

Fan Belt -

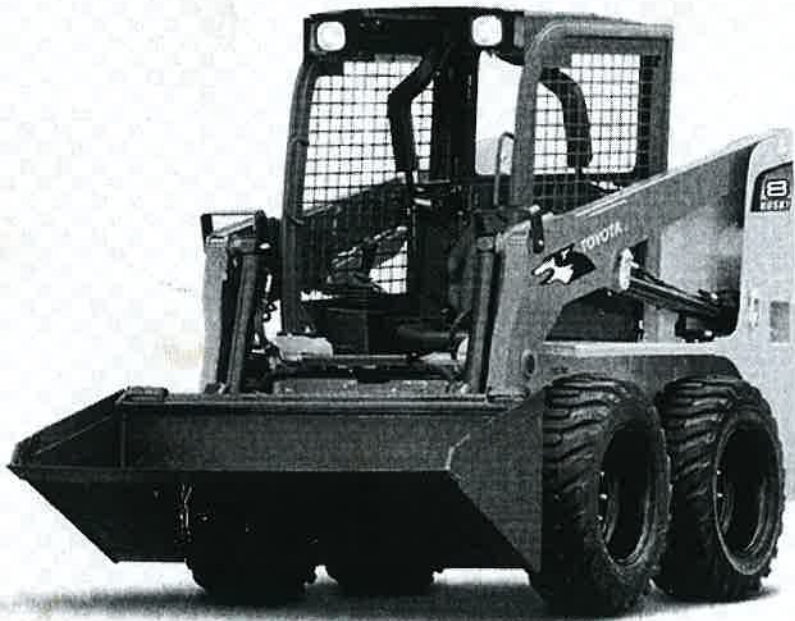
A/C Belt -

Pre Air 1774423800

Engine

SN -

Code No. -



CARRIED OUT BY:

Print Name: MITCH DAVIS

Signed: _____

Date: 3/12/24

CHECKED & RECORDED BY:

Print Name: John Storehouse

Signed: JW Storehouse

Date: 3/12/24



Service & Inspection – Skidsteer

INSTRUCTIONS

- Use this form when performing a scheduled skid steer service inspection.
- All items must be checked by the person(s) performing the specified mechanical and lube services.
- Use the following table to determine the required service type and frequency.

Service Type	Service Frequency – As per Manufacturer’s recommendations
H0250	Every 250 hours or 12 months (<i>whichever comes first</i>)
H0500	Every 500 hours
H1000	Every 1000 hours or 24 months (<i>whichever comes first</i>)
H2000	Every 2000 hours

SECTION 1 – VEHICLE DETAILS

Date:	2/12/24	Hour Reading:	
Unit No:		Service Type:	
Make:	TOYOTA	Model:	HUSKI
VIN No:		Work Order No:	

SECTION 2 – INSPECTION REQUIREMENTS

- ! Before commencing work:
- Park machine on stable, level ground and apply the parking brake.
 - Place wheel chocks at both front and rear wheels.
 - Place 'Danger' and/ or 'Out of Service' tags in appropriate places on machines.
 - Ground all attachments or fit ram lockouts.
 - Isolate electrics on equipment (if fitted).
- ! When service inspection is complete, ensure service sticker is attached.

SECTION 3 – INSPECTION CHECKLIST COMPLETED BY PERSON(S) PERFORMING MECHANICAL AND LUBE SERVICES. PLACE A TICK AT SERVICE TYPE FOR EACH INSPECTION ITEM FOR OK, AN X (CROSS) FOR A DEFECT AND WRITE A COMMENT. WHERE THE INSPECTION ITEM IS NOT FITTED TO THE VEHICLE MARK "NA" IN THE RELEVANT SERVICE TYPE COLUMN. GREYED-BOXES INDICATE NO ACTION IS REQUIRED FOR THE INSPECTION ITEM FOR THE SERVICE TYPE.

Service / Inspection Item	Service Type				Fault Found
	250	500	1000	2000	
CHANGE					
Engine oil & filters	✓				
Fuel filters x 2	✓				
Fuel/water separator filter (if fitted)	NA				
Outer air cleaner filter	✓				
Cabin filter (if necessary or clean)	NA				
Hydraulic / hydrostatic oil filter		✓			
Hydraulic charge filter					
Hydraulic reservoir breather					
Hydraulic oil					
Final drive case oil					



Service & Inspection – Skidsteer

Service / Inspection Item	Service Type				Fault Found
	250	500	1000	2000	
CHANGE - continued					
Case drain filters (if applicable)					
Engine coolant					TOPPED UP
CHECK – correct operation, general condition, adjustment and cleanliness - adjust, repair, replace or top up as required					
Generally, for oil, water, fuel, or air leaks	✓				
Engine oil level	✓				
Chain case oil level	✓				
Hydraulic oil level	✓				
Final drive oil level	NA				
Radiator coolant level & concentration	✓				
Radiator hoses & clamps (damage & tightness)	✓				
Engine air intake and exhaust system leaks or damage	✓				
Battery electrolyte level, terminals, and clamps	✓				
Battery leads & wiring harness (signs of damage, excess heat, deterioration)	✓				
Charging, cooling and air conditioning vee belts	NA				FAN Belt v/s ✓ changed
Hydrostatic drive belt and idler arm stop	NA				
Muffler/spark arrestor	✓				
All safety guards fitted and no damage	✓				
Doors and compartment locks and handles (wear or damage)	NA				
Access steps, handles and safety non-slip treads	✓				
Cabin and attachment	✓				
Seat, adjustment, and adjuster mechanisms	X ✓				Seat v/s DONE
Seat belt and retractors (remove debris from seat and cab)	✓				
Seat bar and control interlock systems	✓				
All safety and operational signage fitted and legible	✓				
Heater fan and air conditioning (including filters)	NA				
All lighting elements	X ✓				Switch v/s DONE
Reverse alarm and reverse camera	✓				
Emergency stop and isolation switches	NA				
Horn and other warning buzzers	X ✓				Not working DONE
CHECK – correct operation, general condition, adjustment and cleanliness - adjust, repair, replace or top up as required					
Gauges, instruments, and warning lights	✓				
Beacon/s	✓				
Neutral start, run and shutdown	✓				
Service and park brakes	X ✓				Handle broken DONE



Service & Inspection – Skidsteer

Service / Inspection Item	SERVICE TYPE				FAULT FOUND
	250	500	1000	2000	
Rear vision mirrors and braces	NA				
All grease points (<i>damage/taking grease</i>)	✓				
Tyres (<i>condition and pressure</i>)	✓				
Wheel rims, studs, nuts, and indicators (<i>damage and correct tension</i>)	✓				
Operating control levers, joysticks, and foot control pedals	✓				
All levers and linkages (<i>free movement and lubrication</i>)	✓				
All hydraulic cylinder pins and bushes for wear and security.	✓				
All bucket, coupler and boom pins and bushes for wear and security.	✓				
Bucket coupler (hitch) for wear and operation.	✓				
All hydraulic rams, hoses, pumps, valves and fittings for leaks or damage.	✓				
All electrical harnesses (<i>signs of excess heat, deterioration</i>)	✓				
Engine, radiator, and gearbox mountings (<i>tightness/ damage</i>)	✓				
Engine valve clearance.					
TESTING					
Test drive for general operation	✓				
Brake test	✓				
CLEAN					
Battery and terminals	✓				
Engine and hydraulic pump areas	✓				
Wheels and brake areas	✓				clean ✓
Radiator, oil coolers, condensers of any build-up of dirt and debris					
Engine breather					
LUBRICATE – as required					
All lift arms, cylinders, pivot pins and wedges	✓				
Steering lever pivots	✓				
Compartment hinges and control linkages			✓		
SECTION 4 – TYRE PRESSURE, CONDITION & OTHER MEASUREMENTS					
TYRE PRESSURE AND CONDITION <i>Check and record.</i>					
	LH FRONT	LH REAR	RH FRONT	RH REAR	
Actual:					
Adjusted:					
% Worn:					
Make:					
Size:					